

Statistics 2016 – full version

Table of contents

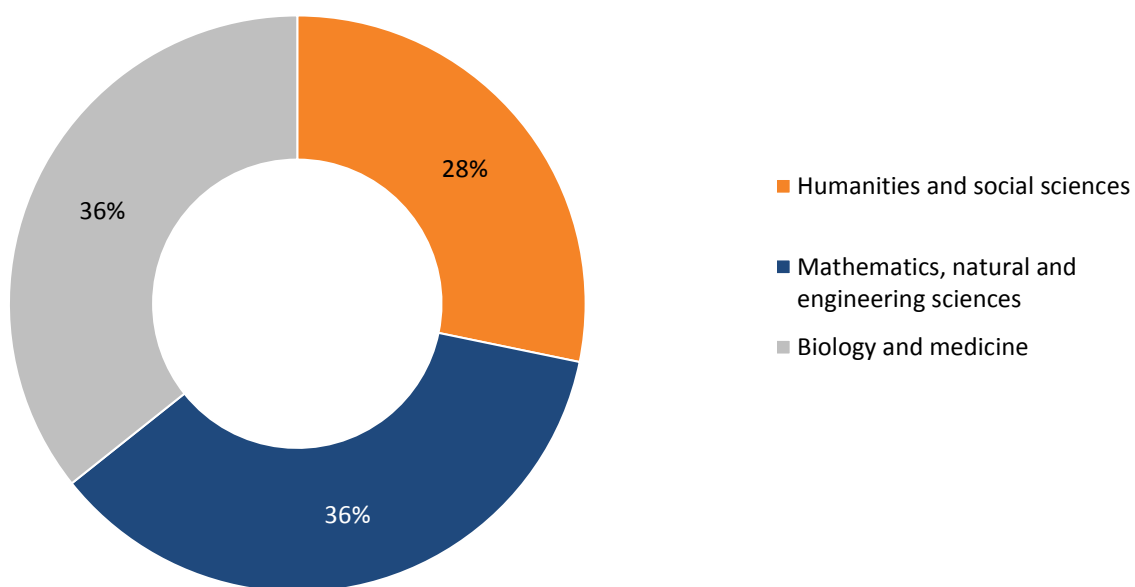
1.	Funding in overview	
1.1	Funding by research area	1
	Approved amounts since 2005	2
1.2	Funding by scheme	3
	Funding by scheme (in percent)	4
1.3	Funding by institution and research area	5
1.3.1	Funding by institution since 2005	6
1.4	Use of approved amounts	7
1.5	Personnel in research projects	8
1.6	Success rates	9
	Submitted applications by gender	10
2.	Projects	
2.1	Funding by research area	11
2.1.1	Funding by group of disciplines and gender	12
2.1.2	Funding by group of disciplines and institution	13
2.2	Funding by group of disciplines	14
2.3	Grants, reductions and rejections	17
2.4	Number of applications and grants since 2005	18
2.5	Requested and approved amounts since 2005	19
3.	Careers	
3.1	Funding by funding scheme	20
3.1.1	Funding by scheme and research area	21
3.1.2	Funding by scheme and institution	22
3.2	Funding by research area	23
3.3	Fellowships by host country	24
4.	Programmes	
4.1	Funding by scheme	25
4.2	National Research Programmes (NRP)	26
4.2.1	Research contributions by research area and institution	27
4.3	National Centres of Competences in Research (NCCR)	28
4.3.1	Research contributions by research area and institution	29
5.	Infrastructures	
5.1	Funding by scheme	30
5.2	Funding by research area	31
6.	Science communication	
6.1	Funding by scheme	32
6.2	Funding by research area	33

1. Overview of funding

1.1 Funding by research area

Amounts in CHF million

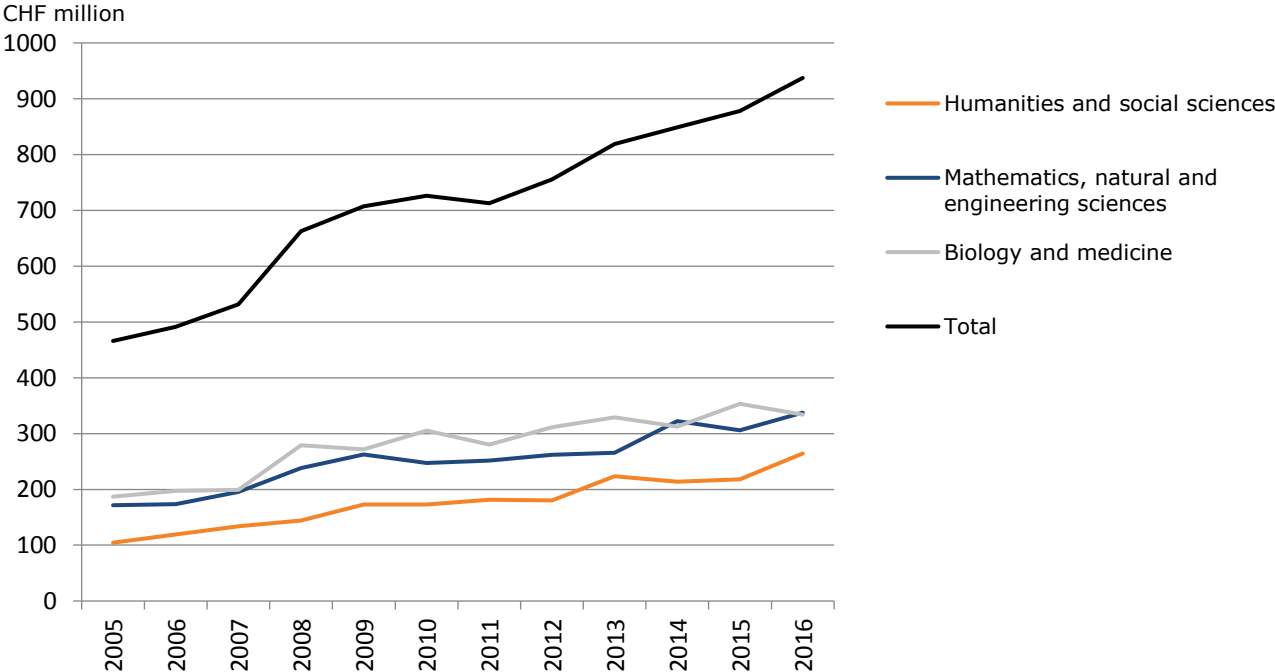
Distribution of the approved amounts



	Amount	Women	Men
Humanities and social sciences	264.3	33%	67%
Mathematics, natural and engineering sciences	337.5	15%	85%
Biology and medicine	334.2	23%	77%
Unapportionable	1.3		
Total	937.3	23%	77%

The statistic 1.1 is available in interactive and extended form: [LINK](#)

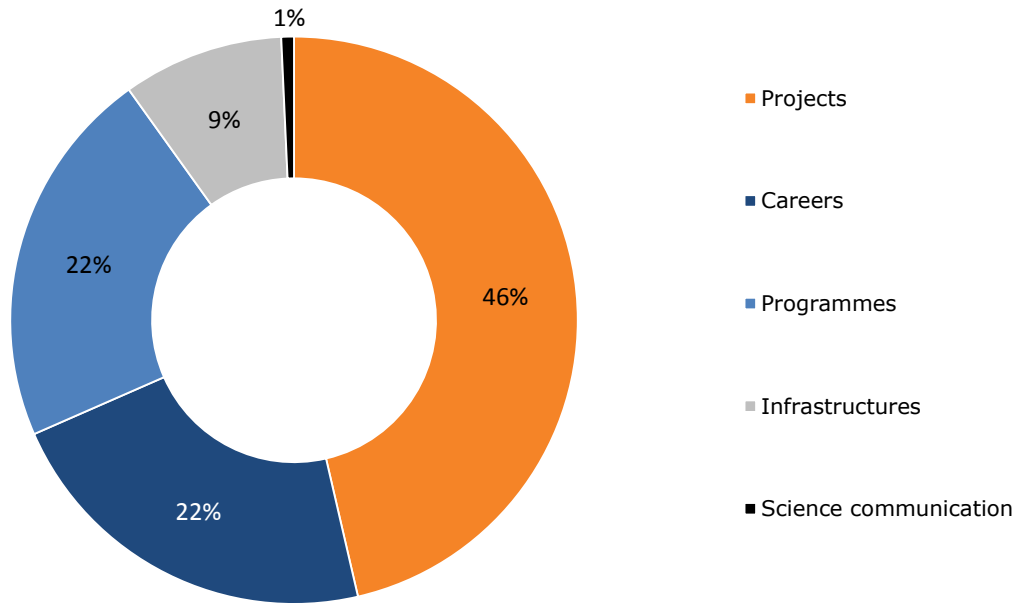
Approved amounts since 2005



1.2 Funding by scheme

Amounts in CHF million

Distribution of the approved amounts



	Number	Amount
Projects	1009	434.7
Careers	1131	206.7
Programmes	570	203.2
Infrastructures	111	86.0
Science communication	423	6.8
Total	3244	937.3

Funding by scheme (in percent)

	Percent	Approved amount	
		Women	Men
Projects	46%	18%	82%
Careers	22%	43%	57%
Programmes	22%	15%	85%
Infrastructures	9%	11%	89%
Science communication	1%	35%	65%
Total	100%	23%	77%

1.3 Funding by institution and research area¹

Amounts in CHF million

Distribution of the approved amounts (incl. overhead)

Institution	Humanities and social sciences	Mathem., natural and engineering sciences	Biology and medicine	Interdisciplinary	Unassignable	Total in CHF million	Total in %	Overhead ²	Total incl. overhead
Universities	176.2	124.6	230.6	28.2	-	559.7	60%	65.4	625.1
Basel (BS)	20.7	16.5	39.9	6.0	-	83.1	9%	9.5	92.6
Berne (BE)	35.5	29.9	34.3	7.1	-	106.8	11%	12.3	119.2
Fribourg (FR)	8.9	10.9	8.3	-	-	28.1	3%	3.6	31.7
Geneva (GE)	22.4	33.3	42.5	8.0	-	106.3	11%	13.0	119.3
Lucerne (LU)	4.1	-	-	-	-	4.1	0.4%	0.5	4.7
Lausanne (Uni LS)	26.1	4.8	37.5	2.1	-	70.6	8%	7.9	78.4
Neuchâtel (NE)	6.0	3.8	3.5	-	-	13.2	1%	1.3	14.5
St. Gallen (SG)	5.8	-	-	-	-	5.8	1%	0.5	6.4
Ticino (TI)	4.8	3.7	1.9	-	-	10.4	1%	1.3	11.7
Zurich (Uni ZH)	41.9	21.7	62.7	5.0	-	131.2	14%	15.5	146.7
ETH Domain	16.4	162.7	53.5	7.5	-	240.1	26%	27.5	267.6
EPF Lausanne (ETH LS)	2.2	64.7	19.2	5.8	-	91.9	10%	10.6	102.5
ETH Zurich (ETH ZH)	14.2	74.9	25.0	-	-	114.1	12%	12.8	126.9
Research institutes ³	0.04	23.1	9.3	1.7	-	34.1	4%	4.1	38.2
Universities of applied sciences	14.6	6.6	2.3	1.3	-	24.8	3%	3.3	28.1
Bern University of Applied Sciences (BFH)	1.0	1.3	-	-	-	2.3	0.2%	0.3	2.6
Kalaisos University of Applied Sciences (FHKD)	0.01	-	-	-	-	0.01	0%	-	0.01
University of Applied Sciences and Arts Northwestern Switzerland (FHNW)	3.0	1.3	0.9	-	-	5.2	1%	0.6	5.8
University of Applied Sciences Eastern Switzerland (FHO)	0.3	0.01	-	-	-	0.3	0%	0.04	0.3
University of Applied Sciences Western Switzerland (HES-SO)	4.2	0.4	0.3	-	-	4.9	1%	0.7	5.6
Lucerne University of Applied Sciences and Arts (HSLU)	1.9	0.0	-	-	-	1.9	0.2%	0.3	2.2
University of Applied Sciences and Arts of Southern Switzerland (SUPSI)	0.3	1.6	0.4	-	-	2.2	0.2%	0.3	2.5
Zürcher Fachhochschule (ZFH)	3.9	2.0	0.8	1.3	-	7.9	1%	1.2	9.1
Universities of teacher education	4.6	0.2	-	-	-	4.8	1%	0.5	5.3
Hospitals (independent of higher education institutions)	-	0.1	3.1	-	-	3.2	0.3%	0.5	3.6
Other research institutes⁴	22.3	3.4	7.5	1.1	-	34.3	4%	2.1	36.4
Others⁵	24.9	23.7	20.7	-	1.3	70.5	8%	0.6	0.8
Total	259.0	321.1	317.8	38.2	1.3	937.3	100%	100.0	1,037.3

¹ If no application was submitted by the respective institution, this is denoted by a dash. Amounts lower than CHF 0.01 million are shown as zero.

² For 2017, a total of 99.1 MCHF (including overhead for energy grants) + 0.9 MCHF in corrections of amount from previous years are available for overhead contributions

³ Research institutes in the ETH Domain (EMPA, EAWAG, PSI, WSL)

⁴ AORI, BITG, EHB, FTL, Agroscope, FiBL, FUS, FMI, IDIAP, IHEID, IST, IRSOL, PMOD, FORS, SPF, SIK-ISEA, CSEM, SIB and other research institutes

⁵ Companies, non-profit organisations, not assignable to an institution and Foreign institutions (e.g. Doc.Mobility, Early/Advanced Postdoc.Mobility)

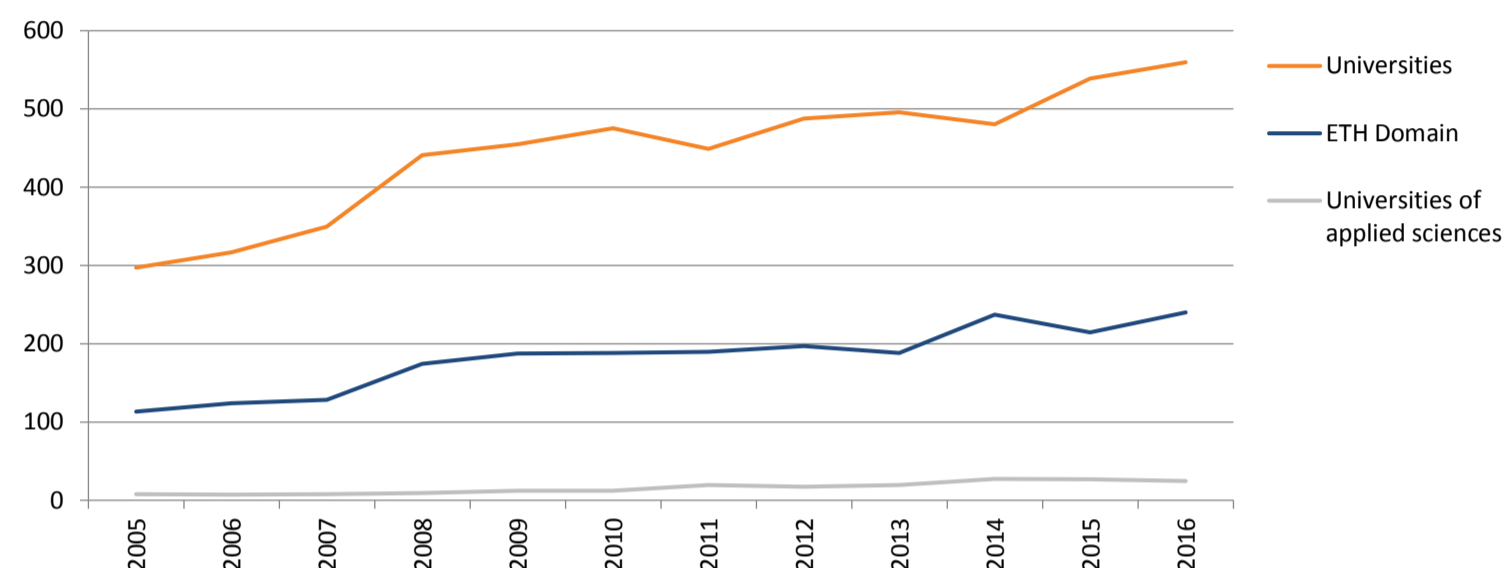
The statistic 1.3 is available in interactive and extended form:

[LINK](#)

1.3.1 Funding by institution since 2005

Amounts in CHF million

Distribution of the approved amounts (incl. overhead)¹



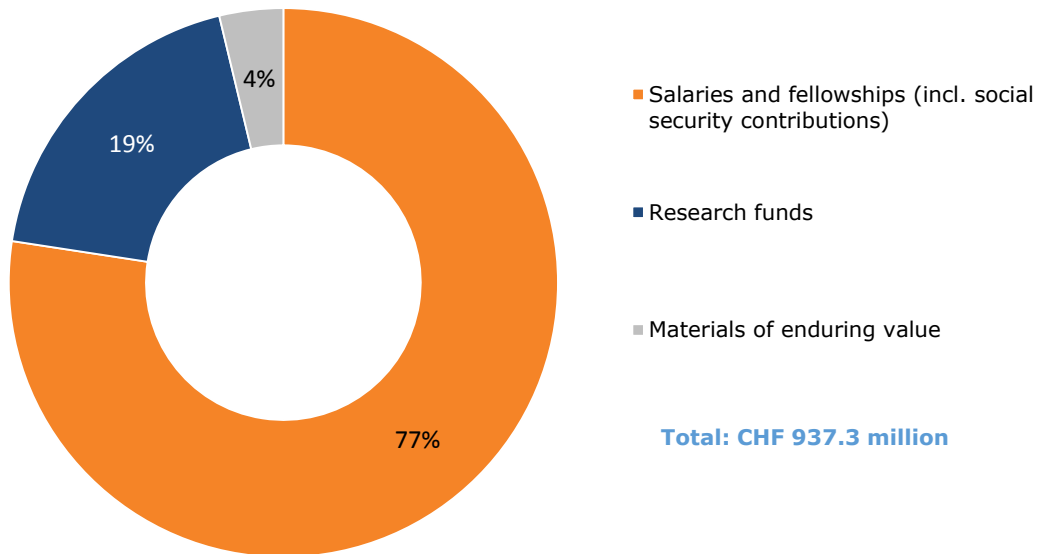
	2005	2006	2007	2008	2009	2010	2011	2012	2013	2014	2015	2016
Universities	297.3	317.0	349.8	440.9	454.8	475.1	448.9	487.8	496.0	480.8	538.8	559.7
Basel (BS)	48.4	53.3	59.2	64.2	83.1	70.7	65.9	70.7	76.6	60.7	85.2	83.1
Berne (BE)	44.6	45.3	54.3	70.9	66.3	67.9	87.5	66.1	87.2	91.8	85.1	106.8
Fribourg (FR)	17.3	16.0	20.2	21.3	25.8	31.1	24.0	25.2	23.9	41.5	22.6	28.1
Geneva (GE)	59.1	59.8	67.7	84.5	94.0	98.5	78.8	104.9	86.8	88.2	109.3	106.3
Lausanne (LS)	43.8	38.6	39.1	74.7	54.5	68.5	56.0	69.6	71.6	62.3	77.5	70.6
Lucerne (LU)	0.4	3.7	2.5	1.3	4.3	3.8	4.6	3.6	2.4	7.0	2.1	4.1
Neuchâtel (NE)	21.0	20.1	21.1	18.4	18.4	12.0	12.7	18.9	12.4	15.1	21.2	13.2
St. Gallen (SG)	5.2	2.9	4.0	4.3	5.5	4.5	6.1	7.1	2.4	2.0	2.4	5.8
Ticino (TI)	2.8	4.3	5.2	5.2	5.7	9.0	8.0	5.5	6.5	10.6	7.9	10.4
Zurich (ZH)	54.7	73.0	76.5	96.1	97.2	109.1	105.3	116.2	126.1	101.8	125.5	131.2
ETH Domain	113.3	124.2	128.3	174.6	187.2	188.3	189.5	196.9	188.2	237.0	214.7	240.1
EPF Lausanne (LS)	36.9	47.7	48.9	73.9	64.1	71.2	72.2	71.2	73.6	75.0	76.8	91.9
ETH Zurich (ZH)	65.5	69.6	69.7	82.9	98.8	94.0	93.3	101.3	92.7	126.8	112.0	114.1
Research institutes ¹	10.9	6.9	9.7	17.8	24.3	23.1	24.0	24.4	21.9	35.2	25.9	34.1
Universities of applied sciences	7.6	7.2	8.1	9.0	12.4	12.2	19.4	17.5	19.4	27.3	27.0	24.8
Bern University of Applied Sciences (BFH)	0.9	0.4	0.4	0.7	3.4	1.4	4.3	4.5	4.8	3.5	4.1	2.3
Kalaidos University of Applied Sciences Switzerland	-	-	0.2	-	-	0.3	-	-	-	-	0.6	0.0
University of Applied Sciences and Arts Northwestern Switzerland (FHNW)	1.9	1.2	2.8	1.9	2.3	3.6	5.0	4.3	6.5	4.5	6.7	5.2
University of Applied Sciences Eastern Switzerland (FHO)	0.3	-	0.5	-	0.4	0.5	0.1	0.2	0.3	2.0	0.1	0.3
University of Applied Sciences Western Switzerland (HES-SO)	1.7	2.2	0.4	1.2	1.5	2.7	5.0	2.8	2.5	5.1	4.6	4.9
Lucerne University of Applied Sciences and Arts (HSLU)	0.9	0.5	1.9	1.8	1.3	0.1	0.9	0.2	1.1	2.3	1.5	1.9
University of Applied Sciences and Arts of Southern Switzerland (SUPSI)	0.3	0.9	1.0	0.5	0.5	0.7	1.3	0.4	0.6	1.3	2.6	2.2
Zürcher Fachhochschule (ZFH)	1.6	2.0	0.9	2.9	3.0	2.9	2.8	5.1	3.6	8.6	6.9	7.9
Universities of teacher education	0.0	0.6	0.8	1.3	1.2	1.3	2.1	1.2	2.0	1.3	1.7	4.8
Hospitals (independent of higher education inst.)	-	-	-	-	-	-	-	-	-	1.0	4.0	3.2
Other research institutes²	-	-	-	-	-	-	-	-	-	20.6	24.2	34.3
Others³	47.7	42.0	44.3	37.0	51.5	49.1	53.0	51.8	113.2	80.6	67.3	70.5
Total	465.9	491.0	531.3	662.8	707.1	726.0	712.9	755.2	818.8	848.5	877.7	937.3

¹ Research institutes in the ETH Domain (EMPA, EAWAG, PSI, WSL)

² SIAF, AORI, BITG, CREALP, EHB, FTL, Agroscope, FIBL, IRO, FUS, FMI, IDIAP, IHEID, IRR, ISSKA, IST, IKG, IUKB, IRSOL, IRB, ISR, PMOD, RWS, SIK-ISEA, FORS, SPF, STH, CSEM, SIB, THCH et other Research Institutes

³ Companies, non-profit organisations, not assignable to an institution and Foreign institutions (e.g. Doc.Mobility, Early/Advanced Postdoc.Mobility)

1.4 Use of approved amounts



1.5 Personnel in research projects

14,600 researchers were involved in SNSF-funded projects in 2016. This figure consists the applicants and their staff.

	Total	Women	Men
Scientists ¹	33.5%	41%	59%
Personnel at doctoral level	49.1%	43%	57%
Technicians, support staff	17.4%	59%	41%
Total	100%	45%	55%

¹ Senior researchers and post-docs

Funding for research projects primarily benefits the promotion of young scientists in Switzerland. Thus 76% of the collaborators are 35 years old or younger.

1.6 Success rates

Amounts in CHF million

	Success rate ¹			Number of applications submitted			Number of applications approved			Approved amount
	Total	Women	Men	Total	Women	Men	Total	Women	Men	
Projects	42%	38%	43%	2 386	508	1 877	1 009	195	813	434.7
Humanities and social sciences	37%	36%	37%	712	211	500	263	77	185	94.9
Mathematics, natural and engineering sciences	47%	40%	48%	816	106	710	384	42	342	155.6
Biology and medicine	43%	39%	44%	777	163	614	334	64	270	169.0
Interdisciplinary research	35%	43%	30%	81	28	53	28	12	16	15.1
Careers²										
Doc.CH	26%	28%	23%	183	104	79	47	29	18	10.1
Doc.Mobility	53%	58%	48%	323	155	168	171	90	81	8.3
Early Postdoc.Mobility	50%	51%	49%	758	290	468	377	147	230	33.2
Advanced Postdoc.Mobility ³	39%	41%	38%	345	132	213	135	54	81	16.6
Marie Heim-Vögtlin grants (MHV)	28%	28%	-	151	151	-	42	42	-	9.1
Ambizione	18%	22%	15%	402	148	254	71	33	38	37.4
SNSF professorships	15%	17%	14%	264	93	171	40	16	24	77.4
Programmes										
Sinergia	22%	4%	29%	96	27	69	21	1	20	40.7
r4d Open Call 2	52%	33%	55%	25	3	22	13	1	12	6.4
IICT	11%	7%	12%	80	14	66	9	1	8	12.6
Infrastructures	74%	67%	74%	150	21	121	111	14	90	86.0
Science communication⁴	84%	88%	81%	441	163	274	371	144	223	6.8

¹ Ratio of the number of applications approved to the number of applications submitted

² without follow-up applications

³ Without return grants

⁴ Without the applications for the OAPEN.CH pilot project

Submitted applications by gender	Women	Men
Doc.CH	57%	43%
Doc.Mobility	48%	52%
Early Postdoc.Mobility	38%	62%
Advanced Postdoc.Mobility	38%	62%
Marie Heim-Vögtlin grants (MHV)	100%	0%
Ambizione	37%	63%
SNSF professorships	35%	65%
Projects	21%	79%

¹ The proportion of female applicants is 100% as the MHV grant is a programme for women scientists.

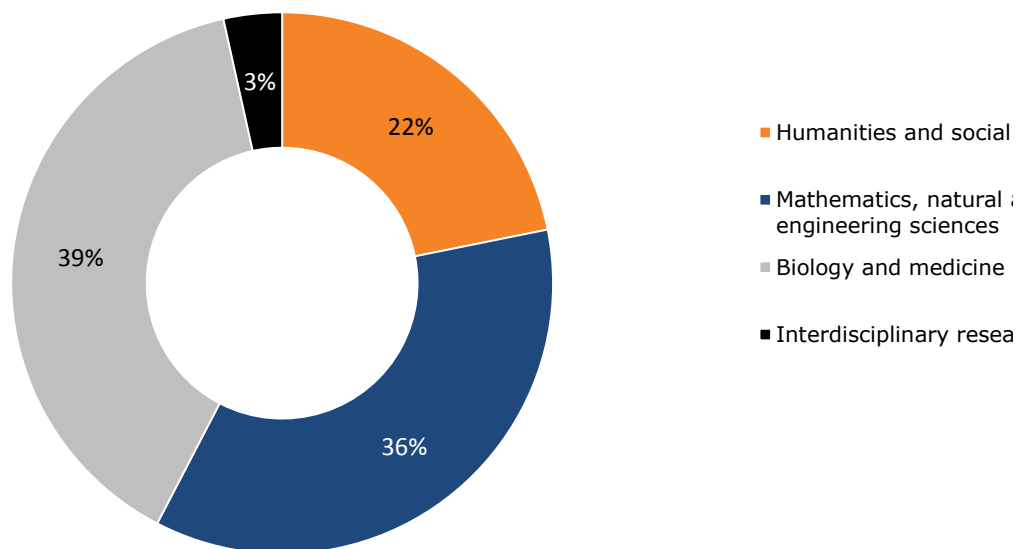
2. Projects

The SNSF supports research projects of high quality across all disciplines. The topics are selected by the researchers. The awarded grants mainly cover staff salaries and research costs.

2.1 Funding by research area

Amounts in CHF million

Distribution of the approved amounts



	Amount
Humanities and social sciences	94.9
Mathematics, natural and engineering sciences	155.6
Biology and medicine	169.0
Interdisciplinary research	15.1
Total	434.7

2.1.1 Funding by group of disciplines and gender

Amounts in CHF million

	Number of proposals submitted			Number of proposals approved			Amount approved		
	Total	Women	Men	Total	Women	Men	Total	Women	Men
Humanities and social sciences	712	211	500	263	77	185	94.9	30%	70%
Theology & religious studies, history, classical studies, archaeology, prehi	85	16	69	40	10	30	14.5	20%	80%
Linguistics and literature, philosophy	105	34	71	39	11	28	17.2	28%	72%
Art studies, musicology, theatre and film studies, architecture	66	12	54	31	7	24	11.3	27%	73%
Ethnology, social and human geography	37	16	20	14	5	8	5.5	53%	47%
Psychology, educational studies	138	56	82	40	22	18	14.2	61%	39%
Sociology, social work, political sciences, media and communication studies, health	139	47	92	47	14	33	15.9	26%	74%
Economics, law	142	30	112	52	8	44	16.3	15%	85%
Mathematics, natural and engineering sciences	816	106	710	384	42	342	155.6	11%	89%
Mathematics	65	11	54	41	6	35	14.7	20%	80%
Astronomy, astrophysics and space sciences	31	4	27	20	3	17	8.4	13%	87%
Chemistry	103	15	88	48	5	43	24.9	10%	90%
Physics	146	9	137	82	4	78	41.5	4%	96%
Engineering sciences	300	42	258	104	12	92	36.3	11%	89%
Environmental sciences	91	14	77	45	7	38	14.3	17%	83%
Earth sciences	80	11	69	44	5	39	15.4	15%	85%
Biology and medicine	777	163	614	334	64	270	169.0	17%	83%
Basic biological research	200	40	160	108	19	89	63.0	16%	84%
General biology	68	8	60	40	4	36	16.6	9%	91%
Basic medical research	158	48	110	64	16	48	31.5	19%	81%
Experimental medicine	137	23	114	64	12	52	34.1	18%	82%
Clinical medicine	170	30	140	49	9	40	20.5	16%	84%
Preventive medicine (epidemiology/early diagnosis/prevention)	35	11	24	6	3	3	2.4	43%	57%
Social medicine	9	3	6	3	1	2	1.0	28%	72%
Interdisciplinary research	81	28	53	28	12	16	15.1	36%	64%
Total	2,386	508	1,877	1,009	195	813	434.7	18%	82%

2.1.2 Funding by group of disciplines and institution¹

Amounts in CHF million

	Universities									ETH Domain			Universities of applied sciences	Other research institutes ³	Universities of teacher education	Hospitals (not higher educ. inst.)	Others ⁴	Total	
	Berne	Basel	Fribourg	Geneva	Lucerne	Lausanne	Neuchâtel	St. Gallen	Ticino (USI)	Zurich	EPF Lausanne	ETH Zurich							Research institutes ²
Humanities and social sciences	10.2	5.3	5.2	13.5	1.2	10.8	2.0	2.1	2.9	17.1	0.9	5.4	0.04	11.3	2.5	3.1	-	1.4	94.9
Theology & religious studies, history, classical studies, archaeology, prehistory and early history	2.6	1.5	1.1	2.4	0.3	1.4	0.1	-	0.4	2.4	-	0.5	-	0.3	0.9	-	-	0.5	14.5
Linguistics and literature, philosophy	0.7	1.0	2.2	4.3	0.5	1.3	1.0	-	0.4	5.3	-	0.6	-	-	-	-	-	-	17.2
Art studies, musicology, theatre and film studies, architecture	1.9	0.6	-	-	-	0.7	0.02	-	0.6	0.1	0.2	1.6	-	5.3	-	-	-	0.2	11.3
Ethnology, social and human geography	1.4	0.6	0.03	0.6	-	1.4	0.1	-	-	0.4	-	-	-	0.3	-	-	-	0.7	5.5
Psychology, educational studies	1.5	0.0	0.5	3.2	-	0.7	-	-	-	3.7	-	0.4	0.01	0.4	0.6	3.1	-	-	14.2
Sociology, social work, political sciences, media and communication studies, health	1.1	0.7	0.8	2.5	0.0	1.5	0.5	-	0.3	2.5	0.6	0.9	0.03	3.9	0.5	-	-	-	15.9
Economics, law	1.0	0.8	0.5	0.4	0.4	3.7	0.3	2.1	1.2	2.8	0.2	1.4	-	1.1	0.5	-	-	-	16.3
Mathematics, natural and engineering sciences	15.1	8.7	5.0	17.8	-	3.0	1.7	-	3.1	10.7	34.1	36.2	16.5	0.8	2.3	-	0.1	0.6	155.6
Mathematics	1.5	1.8	0.5	2.6	-	0.6	0.01	-	1.3	1.0	2.5	2.8	-	0.3	-	-	-	-	14.7
Astronomy, astrophysics and space sciences	2.5	0.1	-	3.1	-	-	-	-	-	1.0	-	0.8	-	0.3	0.6	-	-	-	8.4
Chemistry	1.4	2.4	0.5	2.1	-	0.5	0.8	-	0.3	3.6	4.5	7.2	1.6	0.0	-	-	-	-	24.9
Physics	4.1	2.7	2.7	6.2	-	-	0.2	-	-	1.7	10.9	7.2	5.6	-	0.2	-	-	-	41.5
Engineering sciences	1.8	0.4	0.4	0.8	-	0.1	-	-	1.5	2.2	14.6	9.5	3.3	0.2	1.3	-	0.1	0.1	36.3
Environmental sciences	1.1	1.4	0.6	0.6	-	-	0.4	-	-	0.9	1.3	2.5	5.4	-	0.2	-	-	-	14.3
Earth sciences	2.7	0.02	0.4	2.6	-	1.8	0.2	-	-	0.3	0.3	6.1	0.5	-	-	-	-	0.5	15.4
Biology and medicine	15.7	20.6	5.4	28.7	-	22.6	2.1	-	1.5	34.3	11.5	12.2	6.5	1.2	3.0	-	3.0	0.7	169.0
Basic biological research	4.7	7.8	3.0	11.0	-	8.7	-	-	0.7	10.5	5.3	7.4	3.1	-	0.8	-	-	-	63.0
General biology	1.3	1.9	1.5	0.5	-	1.1	2.1	-	-	2.8	-	0.2	3.1	0.5	0.9	-	-	0.7	16.6
Basic medical research	2.3	2.6	0.4	6.9	-	5.4	-	-	-	8.3	3.1	0.8	-	-	1.0	-	0.6	-	31.5
Experimental medicine	4.2	4.6	0.4	5.7	-	3.5	-	-	0.8	7.4	3.2	3.1	-	-	-	-	1.3	-	34.1
Clinical medicine	2.5	3.2	-	4.2	-	3.0	-	-	-	5.3	-	0.7	0.3	0.3	-	-	1.0	-	20.5
Preventive medicine (epidemiology/early diagnosis/prevention)	0.6	0.6	-	0.4	-	0.8	-	-	-	-	-	-	-	-	-	-	-	-	2.4
Social medicine	0.3	-	-	-	-	0.02	-	-	-	-	-	-	-	0.4	0.2	-	-	-	1.0
Interdisciplinary research	2.1	0.5	0.5	0.6	-	0.4	0.7	-	-	2.5	0.9	3.9	0.7	1.8	0.04	0.4	-	0.1	15.1
Total	43.1	35.2	16.1	60.7	1.2	36.7	6.4	2.1	7.5	64.7	47.4	57.6	23.8	15.1	7.8	3.6	3.0	2.8	434.7

¹ If no application was submitted by the respective institution, this is denoted by a dash. Amounts lower than CHF 0.01 million are shown as zero.

² Research institutes in the ETH Domain (EMPA, EAWAG, PSI, WSL)

³ SIAF, AORI, BITG, EHB, Agrosopes, FIBL, IRO, FMI, IDIAP, IHEID, IST, IUKB, PMOD, FORS, SPF, SIK-ISEA, CSEM, SIB and other research institutes

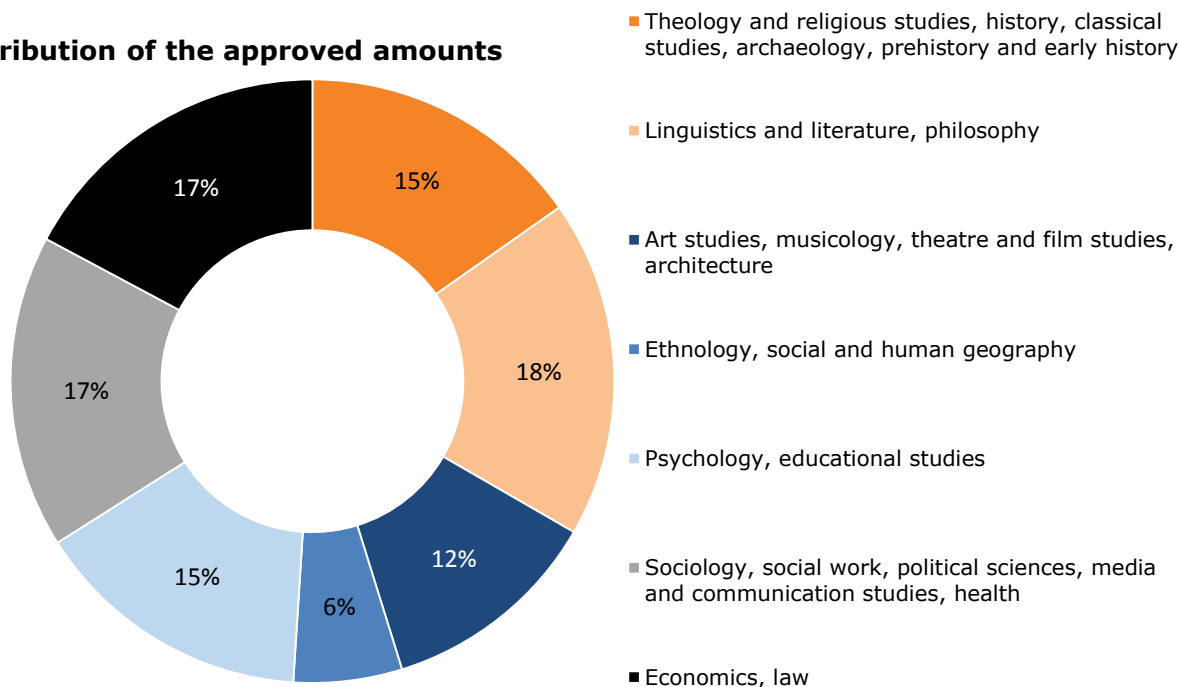
⁴ Companies, non-profit organisations, not assignable to an institution

2.2 Funding by group of disciplines

Amounts in CHF millions

Division I: Humanities and Social Sciences

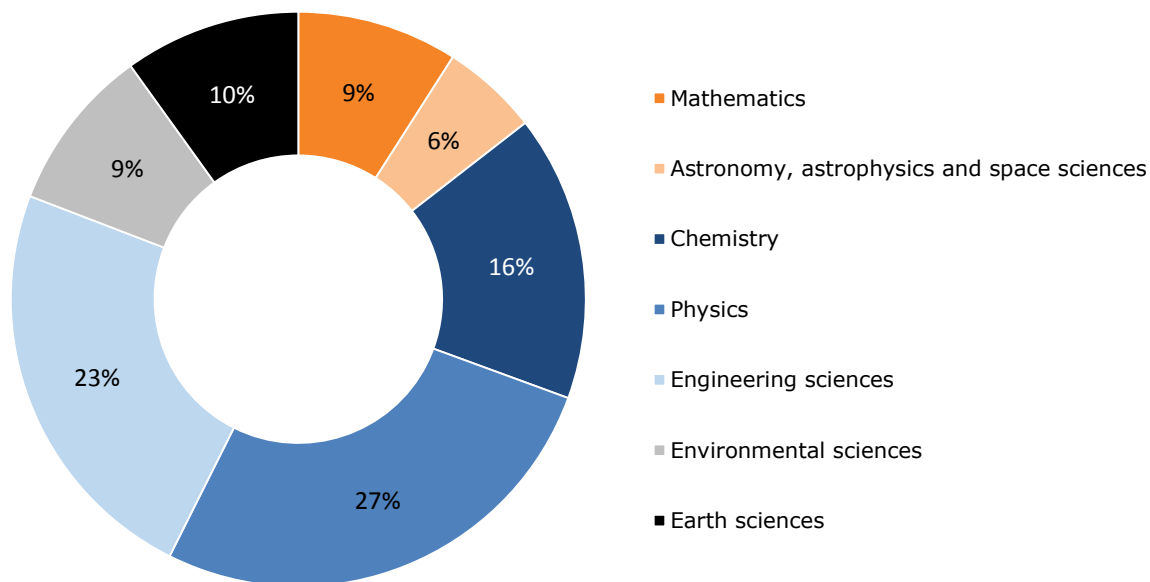
Distribution of the approved amounts



	Number	Amount
Theology and religious studies, history, classical studies, archaeology, prehistory and early history	40	14.5
Linguistics and literature, philosophy	39	17.2
Art studies, musicology, theatre and film studies, architecture	31	11.3
Ethnology, social and human geography	14	5.5
Psychology, educational studies	40	14.2
Sociology, social work, political sciences, media and communication studies, health	47	15.9
Economics, law	52	16.3
Total	263	94.9

Division II: Mathematics, Natural and Engineering Sciences

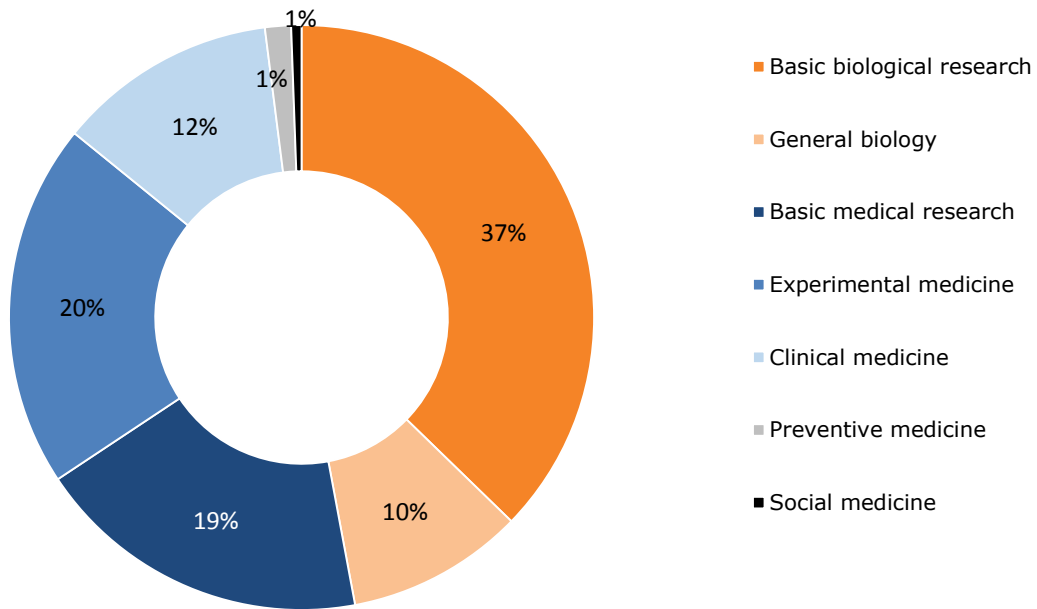
Distribution of the approved amounts



	Number	Amount
Mathematics	41	14.7
Astronomy, astrophysics and space sciences	20	8.4
Chemistry	48	24.9
Physics	82	41.5
Engineering sciences	104	36.3
Environmental sciences	45	14.3
Earth sciences	44	15.4
Total	384	155.6

Division III: Biology and Medicine

Distribution of the approved amounts



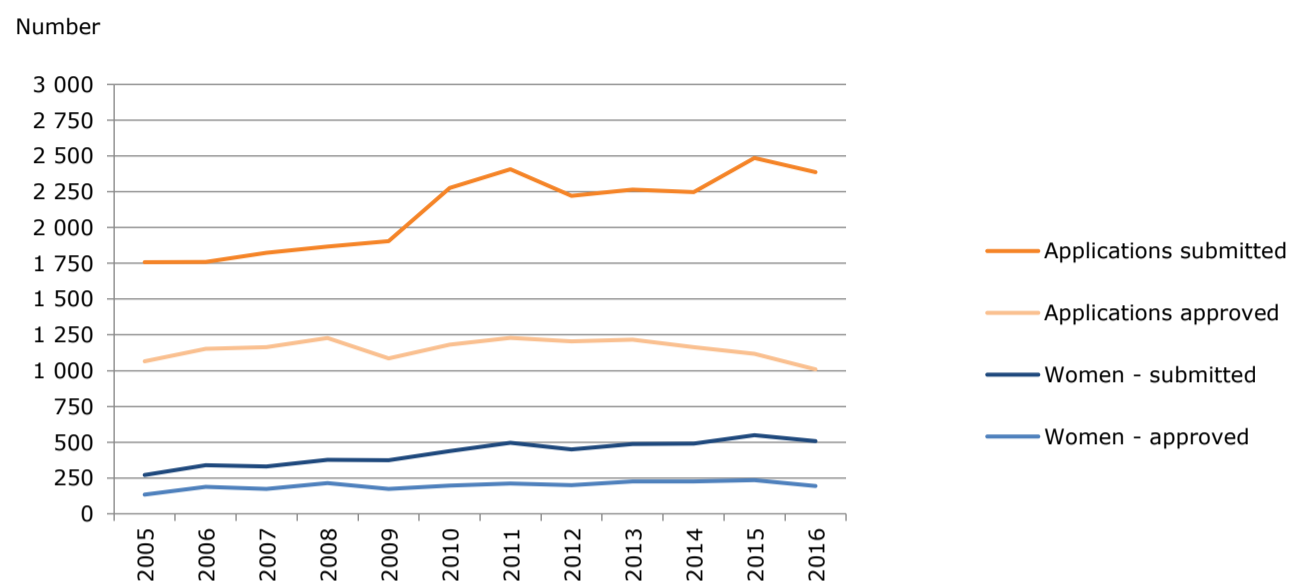
	Number	Amount
Basic biological research	108	63.0
General biology	40	16.6
Basic medical research	64	31.5
Experimental medicine	64	34.1
Clinical medicine	49	20.5
Preventive medicine (epidemiology/early diagnosis/prevention)	6	2.4
Social medicine	3	1.0
Total	334	169.0

2.3 Grants, reductions and rejections

Amounts in CHF million

	Number	Amount	Grants	Reductions	Rejections	
Humanities and social sciences						
Applications submitted	712		43%		57%	Number
Requested amount		272.4	39%	6%	54%	Amount
Grants	263	94.9				
Reductions in approved applications	(164)	9.1				
Rejections, withdrawals	449	168.9				
Mathematics, natural and engineering sciences						
Applications submitted	816		49%		51%	
Requested amount		354.9	45%	14%	42%	
Grants	384	155.6				
Reductions in approved applications	(251)	43.3				
Rejections, withdrawals	432	156.0				
Biology and medicine						
Applications submitted	777		43%		57%	
Requested amount		410.8	42%	8%	50%	
Grants	334	169.0				
Reductions in approved applications	(237)	37.5				
Rejections, withdrawals	443	204.2				
Interdisciplinary research						
Applications submitted	81		38%		62%	
Requested amount		45.5	36%	5%	60%	
Grants	28	15.1				
Reductions in approved applications	(10)	1.1				
Rejections, withdrawals	53	29.2				
Total						
Applications submitted	2386		45%		55%	
Requested amount		1083.5	42%	9%	49%	
Grants	1009	434.7				
Reductions in approved applications	(662)	91.1				
Rejections, withdrawals	1377	558.4				

2.4 Number of applications and grants since 2005

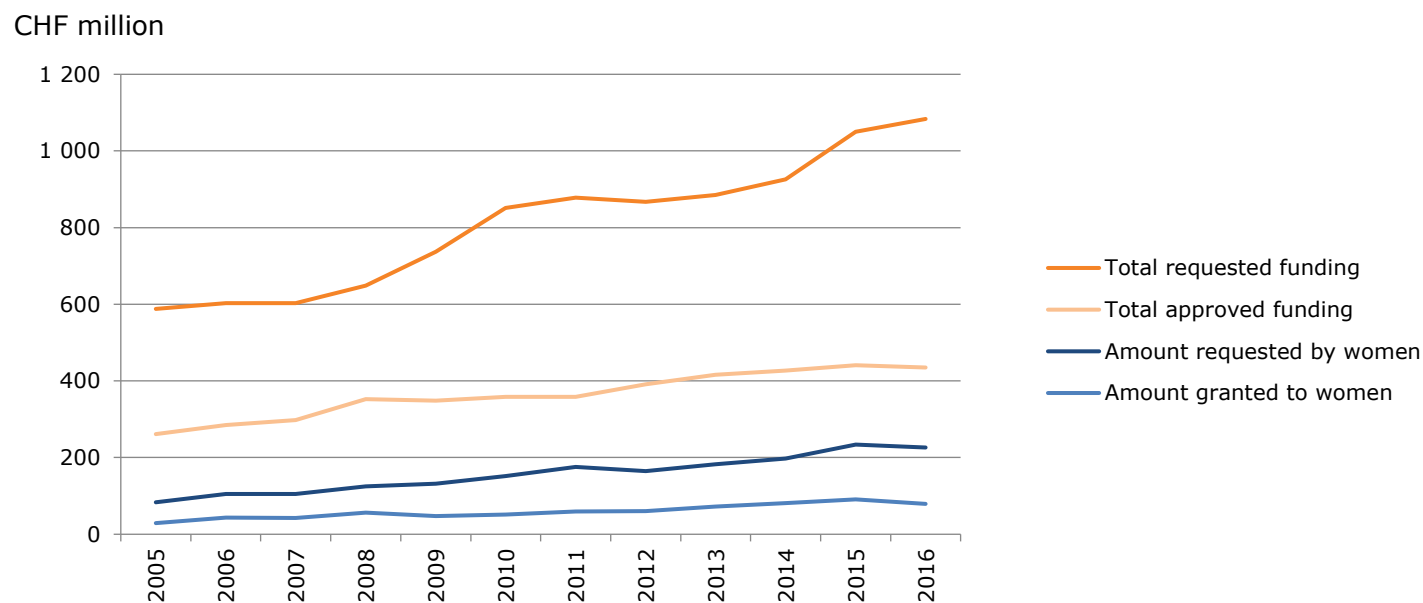


Applications and grants since 2005¹

Year	Number of applications submitted			Number of applications approved			Success rate
	Total	Women	Men	Total	Women	Men	
2005	1,758	15%	85%	1,065	13%	87%	61%
2006	1,753	19%	81%	1,149	16%	84%	66%
2007	1,825	18%	82%	1,165	15%	85%	64%
2008	1,867	20%	80%	1,227	17%	83%	66%
2009	1,902	20%	80%	1,083	16%	84%	57%
2010	2,273	19%	81%	1,180	17%	83%	52%
2011	2,407	21%	79%	1,224	17%	83%	51%
2012	2,221	20%	80%	1,206	17%	83%	54%
2013	2,257	22%	78%	1,208	19%	81%	54%
2014	2,249	22%	78%	1,165	19%	81%	52%
2015	2,486	22%	78%	1,117	21%	79%	45%
2016	2,386	21%	79%	1,009	19%	81%	42%

¹ Adjustment of time series; ERA-Net in the chapter on Programmes as of 2014

2.5 Requested and approved amounts since 2005



Requested and approved amounts since 2005¹

Amounts in CHF million

Year	Amount requested			Amount approved			Approval rate
	Total	Women	Men	Total	Women	Men	
2005	585	14%	86%	261	11%	89%	45%
2006	603	17%	83%	285	15%	85%	47%
2007	603	17%	83%	298	14%	86%	49%
2008	648	19%	81%	352	16%	84%	54%
2009	737	18%	82%	349	14%	86%	47%
2010	851	18%	82%	358	14%	86%	42%
2011	878	20%	80%	359	17%	83%	41%
2012	867	19%	81%	391	15%	85%	45%
2013	885	21%	79%	416	17%	83%	47%
2014	926	21%	79%	427	19%	81%	46%
2015	1050	22%	78%	441	21%	79%	42%
2016	1084	21%	79%	435	18%	82%	40%

¹ Adjustment of time series; ERA-Net in the chapter on Programmes as of 2014

3. Careers

The SNSF has a wide range of funding options in place to promote the careers of young researchers.

3.1 Funding by scheme

Amounts in CHF million

	Number of applications submitted					Number of applications approved					Approved amount
	New applications			Follow-up applications		New applications			Follow-up applications		
	Total	Women	Men	Women	Men	Total	Women	Men	Women	Men	
Career funding schemes											
Doc.CH	183	104	79	-	-	47	29	18	-	-	10.1
MD-PhD fellowships ¹	9	1	8	-	-	9	1	8	-	-	1.6
Doc.Mobility	323	155	168	5	8	171	90	81	4	2	8.3
Early Postdoc.Mobility	758	290	468	-	-	377	147	230	-	-	33.2
Advanced Postdoc.Mobility ²	345	132	213	5	6	135	54	81	3	1	16.6
Marie Heim-Vögtlin grants (MHV)	151	151	-	6	-	42	42	-	4	-	9.1
Ambizione	402	148	254	5	2	71	33	38	5	2	37.4
Ambizione Energy ³	26	5	21	-	-	4	0	4	-	-	2.9
SNSF professorships	264	93	171	8	20	40	16	24	6	20	77.4
Assistant Professor (AP) Energy grants ³	12	5	7	-	-	4	1	3	-	-	4.6
Promotion of Young Scientists in Eastern Europe	17	8	9	-	-	7	4	3	-	-	4.3
Measures for promoting careers											
Graduate courses	1	1	0	-	-	1	1	0	-	-	0.02
International short visits	163	63	100	-	-	128	49	79	-	-	0.9
Research semesters ⁴	5	3	2	-	-	5	3	2	-	-	0.3
Mobility grants for doctoral students ⁵	(60)	(33)	(27)	-	-	(56)	(32)	(24)	-	-	(0.7)
120% support grants ⁵	(31)	(23)	(8)	-	-	(30)	(23)	(7)	-	-	(0.5)
Gender equality grants ⁵	(29)	(29)	(0)	-	-	(29)	(29)	(0)	-	-	(0.03)
Total	2 659	1 159	1 500	29	36	1 041	470	571	22	25	206.7

¹ The national MD-PhD programme is managed by the SAMS

² Without 109 applications for return grants (40 women; 69 men) and 43 approved return grants (15 women; 28 men). Amount approved: CHF 2.8 million

³ Special schemes in connection with the Federal Council's Dispatch on the "Coordinated Swiss Energy Research Action Plan - Measures for the Years 2013-2016"

⁴ Research semesters for departing members of the National Research Council

⁵ Mobility grants, 120% support grants and gender equality grants are supplementary grants in projects and are therefore not treated as separate applications. Hence they are not accounted for in the total number of applications

3.1.1 Funding by scheme and research area

Amounts in CHF million

	Number of applications submitted					Number of applications approved					Success rate ¹			Amount approved Total
	New proposals			Follow-up applications		New proposals			Follow-up applications		Total	Women	Men	
	Total	Women	Men	Women	Men	Total	Women	Men	Women	Men				
Career funding schemes														
Doc.CH	183	104	79	-	-	47	29	18	-	-	26%	28%	23%	10.1
Humanities and social sciences	183	104	79	-	-	47	29	18	-	-	26%	28%	23%	10.1
MD-PhD fellowships²	9	1	8	-	-	9	1	8	-	-	100%	100%	100%	1.6
Biology and medicine	9	1	8	-	-	9	1	8	-	-	100%	100%	100%	1.6
Doc.Mobility	323	155	168	5	8	171	90	81	4	2	53%	58%	48%	8.3
Humanities and social sciences	265	129	136	5	8	137	75	62	4	2	52%	58%	46%	7.0
Mathematics, natural and engineering sciences	29	7	22	-	-	17	4	13	-	-	59%	57%	59%	0.6
Biology and medicine	29	19	10	-	-	17	11	6	-	-	59%	58%	60%	0.8
Early Postdoc.Mobility	758	290	468	-	-	377	147	230	-	-	50%	51%	49%	33.2
Humanities and social sciences	208	104	104	-	-	96	50	46	-	-	46%	48%	44%	8.5
Mathematics, natural and engineering sciences	306	78	228	-	-	166	45	121	-	-	54%	58%	53%	14.3
Biology and medicine	244	108	136	-	-	115	52	63	-	-	47%	48%	46%	10.4
Advanced Postdoc.Mobility³	345	132	213	5	6	135	54	81	3	1	39%	41%	38%	16.6
Humanities and social sciences	103	43	60	1	-	40	20	20	1	-	39%	47%	33%	5.0
Mathematics, natural and engineering sciences	107	29	78	-	1	44	13	31	-	-	41%	45%	40%	4.9
Biology and medicine	135	60	75	4	5	51	21	30	2	1	38%	35%	40%	6.6
Marie Heim-Vögtlin programme (MHV)	151	151	-	6	-	42	42	-	4	-	28%	28%	-	9.1
Humanities and social sciences	64	64	-	5	-	17	17	-	3	-	27%	27%	-	3.2
Mathematics, natural and engineering sciences	20	20	-	-	-	8	8	-	-	-	40%	40%	-	1.8
Biology and medicine	67	67	-	1	-	17	17	-	1	-	25%	25%	-	4.1
Ambizione	402	148	254	5	2	71	33	38	5	2	18%	22%	15%	37.4
Humanities and social sciences	115	61	54	1	-	19	12	7	1	-	17%	20%	13%	8.8
Mathematics, natural and engineering sciences	167	33	134	2	1	30	8	22	2	1	18%	24%	16%	15.0
Biology and medicine	120	54	66	2	1	22	13	9	2	1	18%	24%	14%	13.6
Ambizione Energy⁴	26	5	21	-	-	4	0	4	-	-	15%	0%	19%	2.9
Humanities and social sciences	2	1	1	-	-	-	-	-	-	-	0%	0%	0%	-
Mathematics, natural and engineering sciences	23	4	19	-	-	4	-	4	-	-	17%	0%	21%	2.9
Biology and medicine	1	-	1	-	-	-	-	-	-	-	0%	-	0%	-
SNSF professorships	264	93	171	8	20	40	16	24	6	20	15%	17%	14%	77.4
Humanities and social sciences	89	43	46	1	2	13	6	7	-	2	15%	14%	15%	18.2
Mathematics, natural and engineering sciences	84	16	68	3	8	14	4	10	3	8	17%	25%	15%	29.6
Biology and medicine	91	34	57	4	10	13	6	7	3	10	14%	18%	12%	29.6
Assistant Professor (AP) Energy Grants⁴	12	5	7	-	-	4	1	3	-	-	33%	20%	43%	4.6
Humanities and social sciences	5	3	2	-	-	1	-	1	-	-	20%	0%	50%	1.2
Mathematics, natural and engineering sciences	7	2	5	-	-	3	1	2	-	-	43%	50%	40%	3.4
Biology and medicine	-	-	-	-	-	-	-	-	-	-	-	-	-	-
Promotion of Young Scientists in Eastern Europe	17	8	9	-	-	7	4	3	-	-	41%	50%	33%	4.3
Humanities and social sciences	3	3	-	-	-	2	2	-	-	-	67%	67%	-	1.2
Mathematics, natural and engineering sciences	7	2	5	-	-	2	1	1	-	-	29%	50%	20%	1.2
Biology and medicine	7	3	4	-	-	3	1	2	-	-	43%	33%	50%	1.9
Measures for promoting careers														
Graduate courses	1	1	-	-	-	1	1	-	-	-	100%	100%	-	0.0
Humanities and social sciences	1	1	-	-	-	1	1	-	-	-	100%	100%	-	0.0
International short visits	163	63	100	-	-	128	49	79	-	-	79%	78%	79%	89.5340
Humanities and social sciences	56	33	23	-	-	41	23	18	-	-	73%	70%	78%	0.3
Mathematics, natural and engineering sciences	62	14	48	-	-	51	13	38	-	-	82%	93%	79%	0.4
Biology and medicine	45	16	29	-	-	36	13	23	-	-	80%	81%	79%	0.3
Research semesters⁵	5	3	2	-	-	5	3	2	-	-	100%	100%	100%	0.3
Mobility grants⁶	(60)	(33)	(27)	-	-	(56)	(32)	(24)	-	-	93%	97%	89%	(0.7)
120% support grants⁶	(31)	(23)	(8)	-	-	(30)	(23)	(7)	-	-	97%	100%	88%	(0.5)
Gender equality grants⁶	(29)	(29)	(0)	-	-	(29)	(29)	(0)	-	-	100%	100%	-	(0.03)
Total	2 659	1 159	1 500	29	36	1 041	470	571	22	25	39%	41%	38%	206.7

¹ Ratio of the number of applications approved to the number of applications submitted (new applications)

² The national MD-PhD programme is managed by the SAMS.

³ Without 109 applications for return grants (40 women; 69 men) and 43 approved return grants (15 women; 28 men). Amount approved: CHF 2.8 million

⁴ Special schemes in connection with the Federal Council's Dispatch on the "Coordinated Swiss Energy Research Action Plan - Measures for the Years 2013-2016"

⁵ Research semesters for departing members of the Research Council

⁶ Mobility grants, 120% support grants and Gender equality grants are supplementary grants and are therefore not treated as separate applications. Hence they are not accounted for in the total number of applications, but are considered in the approved amount.

3.1.2 Careers - Funding by scheme and institution¹

Amounts in CHF million

	Universities										ETH Domain		Research institutes ²	Various ³	Total
	Basel	Berne	Fribourg	Geneva	Lausanne	Lucerne	Neuchâtel	St. Gallen	Ticino (USI)	Zurich	EPF Lausanne	ETH Zurich			
Number of applications approved⁴															
Doc.CH	7	6	5	5	4	2	-	2	1	11	1	1	-	2	47
MD-PhD fellowships	3	1	-	2	1	-	-	-	-	1	1	-	-	-	9
Marie Heim-Vögtlin programme (MHV)	7	2	1	5	3	-	-	-	1	12	2	5	1	3	42
Ambizione	13	10	5	4	8	2	1	-	-	7	6	10	2	3	71
Ambizione Energy ⁵	-	-	-	-	-	-	-	-	-	-	3	1	-	-	4
SNSF professorships	3	12	1	5	2	-	1	-	-	6	3	7	-	-	40
Assistant Professor (AP) Energy grants ⁵	-	-	-	1	-	-	-	-	-	-	2	1	-	-	4
Graduate courses	-	1	-	-	-	-	-	-	-	-	-	-	-	-	1
International short visits ⁶	10	11	5	8	12	1	-	1	2	27	6	13	15	16	128
Research semesters	-	-	1	-	-	1	-	-	1	1	-	1	-	-	5
Return grant for APM	7	5	3	4	7	-	-	-	-	7	1	8	1	-	43
Total	50	48	21	34	37	6	2	3	5	72	25	47	19	24	393
Amounts approved⁷															
Doc.CH	1.4	1.2	1.2	1.3	0.8	0.4	0.03	0.5	0.3	2.2	0.1	0.2	-	0.4	10.1
MD-PhD fellowships	0.5	0.2	-	0.4	0.2	-	-	-	-	0.2	0.2	-	-	-	1.6
Marie Heim-Vögtlin programme (MHV)	1.4	0.5	0.3	1.3	0.7	-	0.1	-	0.2	2.0	0.5	1.1	0.3	0.7	9.1
Ambizione	7.1	5.3	2.6	2.0	5.0	1.0	0.4	-	-	3.6	2.3	5.3	1.1	1.6	37.4
Ambizione Energy	-	-	-	-	-	-	-	-	-	-	2.3	0.6	-	-	2.9
SNSF professorships	6.2	17.1	3.1	8.8	5.5	0.01	2.5	-	-	13.8	6.2	13.6	-	0.6	77.4
Assistant Professor (AP) Energy grants	-	-	-	1.2	-	-	-	-	-	-	2.2	1.2	-	-	4.6
Graduate courses	-	0.02	-	-	-	-	-	-	-	-	-	-	-	-	0.02
International short visits	0.1	0.1	0.03	0.1	0.1	0.01	-	0.0	0.01	0.2	0.1	0.1	0.1	0.1	0.9
Research semesters	-	-	0.1	-	-	0.05	-	-	0.1	0.03	-	0.02	-	-	0.3
Return grant for APM	0.4	0.3	0.1	0.2	0.4	-	-	-	-	0.5	0.1	0.6	0.1	-	2.8
Total	17.2	24.7	7.5	15.3	12.6	1.4	3.0	0.5	0.5	22.6	14.0	22.6	1.7	3.4	147.1

¹ Without Doc.Mobility/Early/Advanced Postdoc.Mobility/PROMYS since these cannot be allocated to the individual higher education institutions.

If no application was submitted by the respective institution, this is denoted by a dash. Amounts lower than CHF 0.01 million are shown as zero.

² Research institutes in the ETH Domain (EMPA, EAWAG, PSI, WSL)

³ Universities of applied sciences, Universities of teacher education, Hospitals, other research institutes, companies/private sector, non-profit organisations and not assignable to an institution

⁴ Includes only new submissions

⁵ Special schemes in the context of the Dispatch on the "Coordinated Swiss Energy Research Action Plan - Measures for the Years 2013-2016".

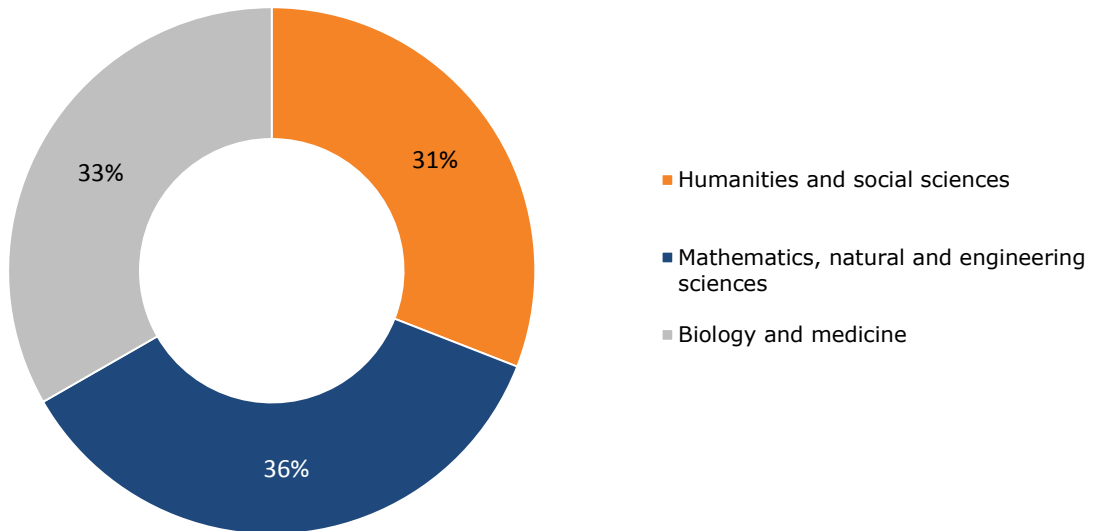
⁶ One request can not be allocated to a individual higher education institution

⁷ Includes new applications and follow-up applications

3.2 Funding by research area

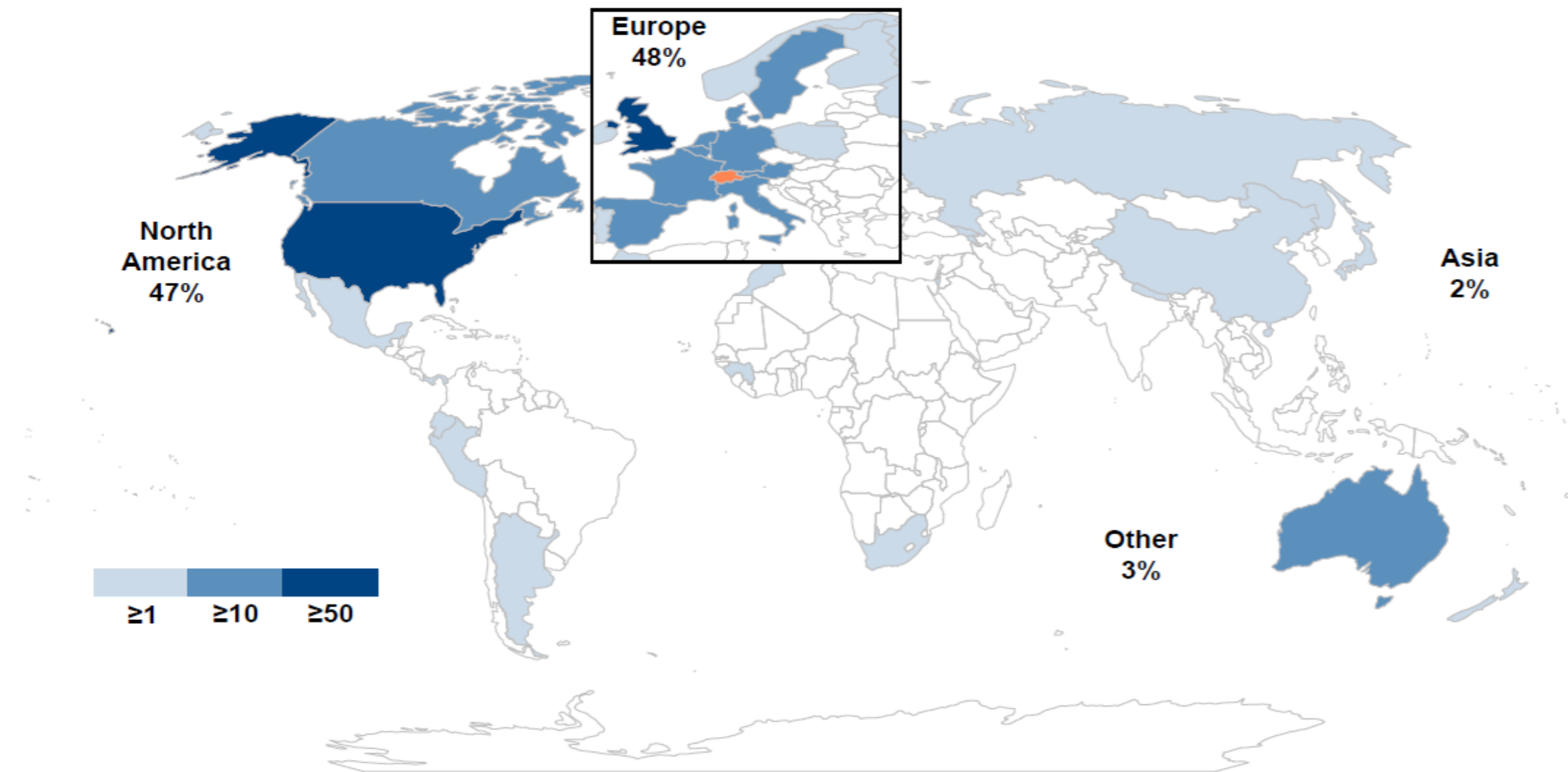
Amounts in CHF million

Distribution of the approved amounts



	Amount
Humanities and social sciences	63.9
Mathematics, natural and engineering sciences	74.0
Biology and medicine	68.8
Total	206.7

3.3 Fellowships by host country



4. Programmes

Programmes are funding schemes with pre-defined thematic, conceptual and organisational parameters. They are either suggested by researchers or their home institutions, or established by political actors.

4.1 Funding by scheme

Amounts in CHF million

	Number	Amount
National Research Programmes (NRPs)	102	47.7
National Centres of Competence in Research (NCCRs)¹	335	71.5
Sinergia	21	40.7
International programmes	103	30.4
Bilaterale Programme		
Sino-Swiss Science and Technology Cooperation	11	3.8
Strategic Japanese-Swiss Science and Technology Programme	4	0.8
Swiss-South Africa Joint Research Programme	12	4.0
Andere Programme		
Multilaterale Zusammenarbeit	6	1.1
Swiss Programme for Research on Global Issues for Development (r4d programme)	31	12.1
SCOPES	17	0.1
ERA-NET	22	8.4
Investigator initiated clinical trials	9	12.6
Special Programmes University Medicine (Longitudinal studies)²	-	0.0
Doctoral programmes (ProDoc)²	-	0.3
Total	570	203.2

¹ Sub-projects

² Additional personnel costs and supplementary grants

4.2 National Research Programmes (NRPs)

Amounts in CHF million

The National Research Programmes (NRPs) study problems of societal, political and economic importance for Switzerland. The topics are prescribed by the Federal Council.

	Approved amount 2016 ¹	Overall budget	Overall amount approved up to 2016 ²	Duration
Current NRPs				
NRP 66 Resource Wood	0.02	18.0	16.6	2012-2016
NRP 67 End of Life	0.2	15.0	12.5	2012-2017
NRP 68 Sustainable Use of Soil as a Resource	1.0	13.0	12.2	2013-2017
NRP 69 Healthy Nutrition and Sustainable Food Production	2.9	13.0	10.7	2013-2018
NRP 70 Energy Turnaround	0.4	37.0	30.8	2015-2019
NRP 71 Managing Energy Consumption	-	8.0	6.1	2015-2019
NRP 72 Antimicrobial Resistance	9.6	17.0	9.6	2017-2021
NRP 74 Smarter Health Car	12.0	20.0	12.0	2017-2021
NRP 75 Big data	20.6	25.0	20.6	2017-2021
Joint Programming Initiative on Agriculture, Food Security and Climate Change (FACCE-JPI) und Joint Programming initiative A Healthy Diet for a Healthy Life (JPI HDHL)	0.04	4.0	3.9	2013-2017
Joint Programming Initiative on Antimikrobielle Resistenz (JPIAMR)	0.9	3.0	0.9	2017-2021
New NRPs				
NRP 73 Sustainable Economy	-	20.0	-	2017-2022
Total	47.7	175.0	129.8	

¹ Excluding grants for formally terminated programmes

² These amounts do not take account of repayments, third-party funds, etc.

4.2.1 National Research Programmes - Research grants¹ by research area and institution²

Amounts in CHF million

	Humanities and social sciences	Mathematics, natural and engineering sciences	Biology and medicine	Total
Universities	5.9	6.3	14.8	27.1
Basel	1.0	1.2	4.4	6.6
Berne	0.7	1.2	1.7	3.6
Fribourg	-	0.9	0.2	1.1
Geneva	-	1.2	1.6	2.8
Lausanne	-	0.6	2.6	3.2
Lucerne	1.2	-	-	1.2
Neuchâtel	-	-	-	-
St. Gallen	1.0	-	-	1.0
Ticino (USI)	0.6	0.6	-	1.2
Zurich	1.4	0.7	4.3	6.5
ETH Domain	0.5	7.3	4.3	12.1
EPF Lausanne	-	2.8	1.0	3.8
ETH Zurich	0.5	4.3	1.9	6.7
Research institutes ³	-	0.1	1.4	1.5
Universities of applied sciences⁴	1.3	3.2	0.8	5.3
Various⁵	0.3	0.9	1.9	3.0
Total	8.0	17.7	21.8	47.5

¹ Without implementation mandates

² If no application was submitted by the respective institution, this is denoted by a dash. Amounts lower than CHF 0.01 million are shown as zero.

³ Research institutes in the ETH Domain (EMPA, EAWAG, PSI, WSL)

⁴ Including universities of teacher education

⁵ Research centres, companies et non-profit organisations

4.3 National Centres of Competence in Research (NCCR)

Amounts in CHF million

With the National Centres of Competence in Research the SNSF promotes long-term research networks in areas of strategic significance for the future of Swiss science, economy and society.

2005 series	Contribution SNSF 2016 ¹	Contribution SNSF for 12 years	Total budget for 12 years	Start	Home institution
NCCR Affective Sciences: Emotions in Individual Behaviour and Social Processes	1.5	28.1	92.9	2005	University of Geneva
NCCR Democracy: Challenges to Democracy in the 21st Century	1.3	19.6	44.7	2005	University of Zurich
NCCR Iconic Criticism: Power and Importance of Pictures (Eikones)	1.2	19.9	48.8	2005	University of Basel
NCCR Mediality: Historical Perspectives	0.8	15.9	33.7	2005	University of Zurich
NCCR Trade Regulation: International Trade Regulation - From Fragmentation to Coherence	0.9	26.4	38.3	2005	University of Berne
Total	5.6	109.9	258.4		
2010 series	Contribution SNSF 2016 ¹	Contribution SNSF for 8 years	Total budget for 8 years	Start	Home institution
NCCR Chemical Biology: Visualisation and Control of Biological Processes Using Chemistry	4.2	28.2	64.5	2010	University of Geneva / ETH Zurich
NCCR Kidney.CH: Kidney Control of Homeostasis	4.4	33.1	46.9	2010	University of Zurich
NCCR LIVES: Overcoming vulnerability: life course perspectives	4.1	29.3	81.4	2011	University of Lausanne / University of Geneva
NCCR MUST: Molecular Ultrafast Sciences and Technology	4.5	35.1	85.0	2010	ETH Zurich / University of Berne
NCCR QSIT: Quantum Science and Technology	5.4	37.9	117.7	2011	ETH Zurich / University of Basel
NCCR Robotics: Intelligent Robots for Improving the Quality of Life	4.3	28.7	61.7	2010	EPF Lausanne / ETH Zurich
NCCR SYNAPSY: The synaptic bases of mental diseases	4.7	35.0	102.1	2010	University of Geneva / EPF Lausanne / University of Lausanne
NCCR TransCure: From transport physiology to identification of therapeutic targets	3.0	25.9	59.9	2010	University of Berne
Total	34.5	253.2	619.2		
2014 series	Contribution SNSF 2016 ¹	Contribution SNSF for 4 years	Total budget for 4 years	Start	Home institution
NCCR Bio-Inspired Materials	3.0	12.0	27.1	2014	University of Fribourg
NCCR Digital Fabrication: Advanced Building Processes in Architecture	3.7	13.4	24.2	2014	ETH Zurich
NCCR MARVEL: Computational Materials - Design and Discovery	4.2	18.0	38.7	2014	EPF Lausanne
NCCR MSE: Molecular Systems Engineering	4.2	16.9	31.3	2014	University of Basel / ETH Zurich
NCCR On the Move: The Migration-Mobility Nexus	4.3	17.2	25.0	2014	University of Neuchâtel
NCCR PlanetS: Origin, Evolution, and Characterisation of Planets	4.4	17.6	33.6	2014	University of Berne / University of Geneva
NCCR RNA & Disease: The Role of RNA Biology in Disease Mechanisms	4.5	16.7	39.9	2014	University of Berne / ETH Zurich
NCCR SwissMAP: The Mathematics of Physics	3.0	11.2	27.9	2014	University of Geneva / ETH Zurich
Total	31.3	123.0	247.7		
All NCCRs	71.5	486.1	1,125.3		

¹ Also contains contributions for management, knowledge and technology transfer, promotion of young scientists, etc.

4.3.1 National Centres of Competence in Research - Research grants by research area and institution (SNSF portion only)¹

Amounts in CHF million

	Humanities and social sciences	Mathematics, natural and engineering sciences	Biology and medicine	Total
Universities	13.3	15.0	15.0	43.3
Basel	1.0	4.3	1.0	6.3
Berne	1.5	2.4	3.8	7.6
Fribourg	0.1	2.2	0.5	2.9
Geneva	2.9	4.6	4.0	11.6
Lausanne	2.8	-	2.1	4.9
Lucerne	0.2	-	-	0.2
Neuchâtel	2.9	0.1	-	3.0
St. Gallen	-	-	-	-
Ticino (USI)	-	-	-	-
Zurich	1.9	1.4	3.7	7.0
ETH Domain	3.2	18.0	4.5	25.7
EPF Lausanne	0.1	6.7	3.0	9.8
ETH Zurich	3.0	10.8	1.5	15.4
Research institutes ²	-	0.5	-	0.5
Universities of applied sciences³	-	-	-	-
Others⁴	-	1.2	1.3	2.5
Total	16.4	34.2	20.8	71.5

¹ Amounts lower than CHF 0.01 million are shown as zero.

² Research institutes in the ETH Domain (EMPA, EAWAG, PSI, WSL)

³ Including universities of teacher education

⁴ Research centres, companies and non-profit organisations

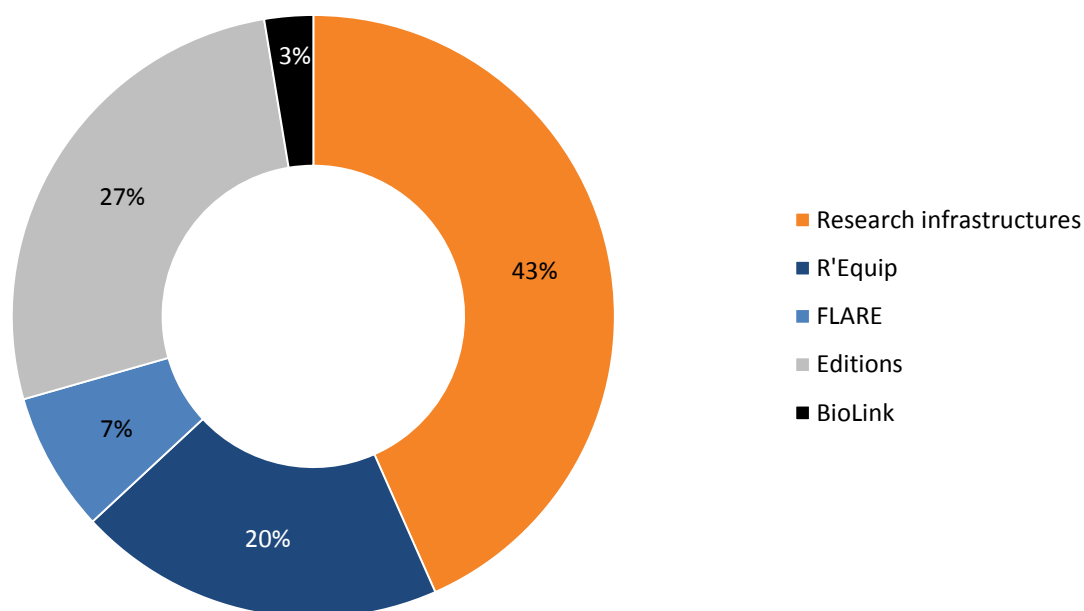
5. Infrastructures

In individual cases, the SNSF provides direct funding for research infrastructures that are indispensable for research projects. This is complemented by specific funding programmes.

5.1 Funding by scheme

Amounts in CHF million

Distribution of the approved amounts

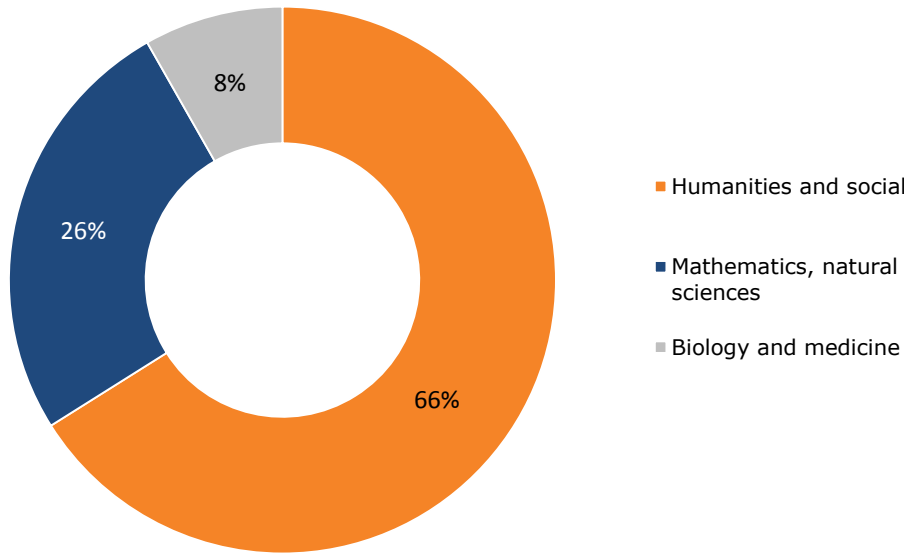


	Number	Amount
Research infrastructures	17	37.3
R'Equip	58	16.9
FLARE	10	6.4
Editions	23	23.1
BioLink	3	2.2
Total	111	86.0

5.2 Funding by research area

Amounts in CHF million

Distribution of the approved amounts



	Amount
Humanities and social sciences	56.7
Mathematics, natural and engineering sciences	22.0
Biology and medicine	7.1
Unapportionable	0.2
Total	86.0

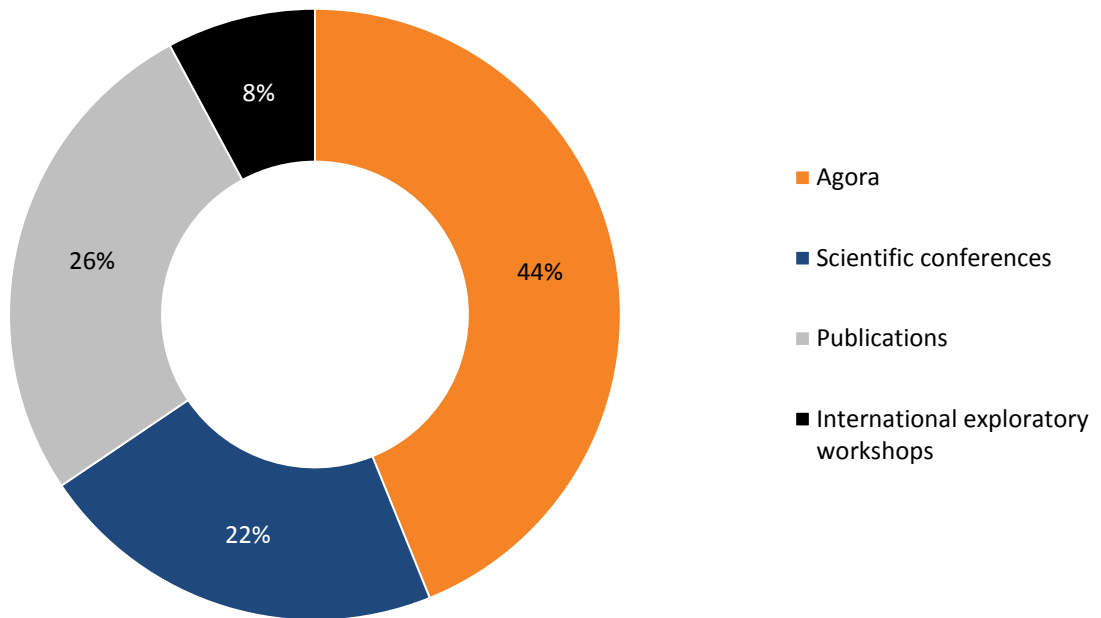
6. Science communication

The SNSF promotes communication between researchers as well as between science and society.

6.1 Funding by scheme

Amounts in CHF million

Distribution of the approved amounts

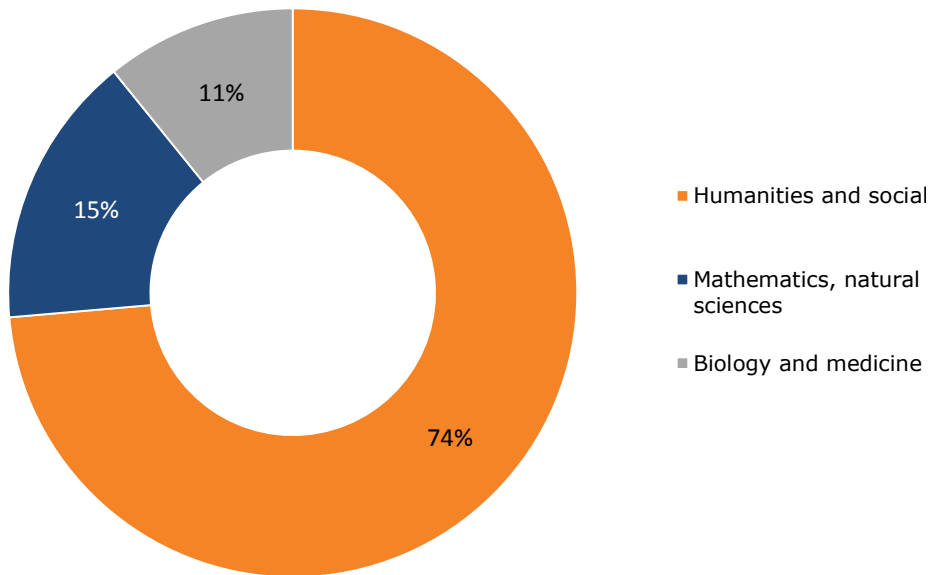


	Number	Amount
Agora	20	3.0
Scientific conferences	223	1.5
Publications	138	1.8
OAPEN-CH Pilotprojekt	52	0.8
Publications	86	1.0
International exploratory workshops	42	0.5
Total	423	6.8

6.2 Funding by research area

Amounts in CHF million

Distribution of the approved amounts



	Betrag
Humanities and social sciences	5.0
Mathematics, natural and engineering sciences	1.1
Biology and medicine	0.7
Total	6.8